

09-115 Cell Size Change

Section: Operator Guide

Topic: Cell Size Change

Procedure Number: 09-115

Summary

This guide will provide you with step-by-step instructions on changing the size of a cell.

Prodedure

Select **Location Viewer/Browser** from either the drop down menu or on screen button. The location will vary depending on your customized cover program.

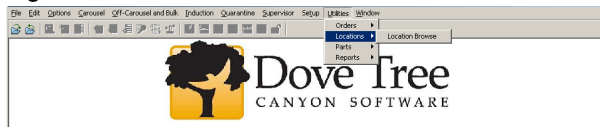
1. Open Location Browse
 2. Search for location you want to change cell size. See [11-113 Research Locations](#)
 3. Enable *Modify Mode* this allows you to edit fields for location,
 4. Change cell size.
 5. Return to *Query Mode*
-

1. Open Location Browse

In the main menu click on **Utilities > Locations > Location Browse**

See *figure 1*.

Figure 1.



2. Search for location

Search for location you want to change cell size

See *figure 2*.

Figure 2.

Location	C/Size	Pref	Part Number	Deduct	Max_Cell_Qty	Status	TempFlg	Sort Path
0110100A	C	1	919028010	True	24			0
0110100A	B	1	1120401	True	21	False		0
0110100B	B	1	CE310-100	False	42	False		0
0110100A	C	1	MLT-N0205LP	False	40			0
0110100A	C	1	312-0711-688	True	51	False		0
0110100A	A	1	BP-600	False	805	False		0
0110100B	A	1	23065-001	False	30			0
0110100C	A	1	16-2111-L	False	805	False		0
0110100D	A	1	861-03087-002	False	805	False		0
0110100A	C	1	482263-001	False	51	False		0
0110100A	B	1	6501151	False	19	False		0

Seq. Part Number	Receipt Date	Exp. Date	Qty. on Hand	Allocand. Qty	Expected Qty	Seq. #
1st alias for R part number	06/17/2011	01/01/2001	5	5	0	1616
2nd alias for R part number	06/17/2011	01/01/2001	10	0	0	1942
3rd alias for R part number	06/17/2011	01/01/2001	20	0	0	1943

Loc. Number: Total QOH for this Loc: 59
 User Name: SUPERVISOR Allocation Expected Exit Details

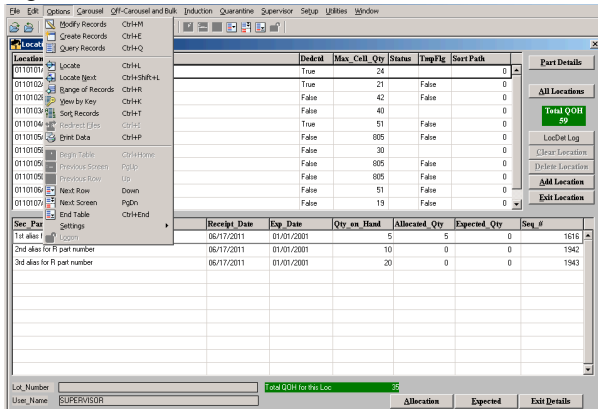
2. Enter Modify Mode

1. Enter **Modify Mode**:

- Press **Ctrl+M** or navigate to the Options menu and select **Modify Records**


See figure 3.

Figure 3.



3. Change the cell size for desired location.

Change the cell size.

 If you change the cell_size to a size that no part number requires, this location will never be used again for putaways.

See figure 4.

Figure 4.

Location	CSite	Pref	Part Number	Deduct	Max_Cell_Qty	Status	TempFlg	Sort Path
0110101A	C	1	915F03010	True	24	False	0	0
0110102A	B	1	111P01	True	21	False	0	0
0110102B	B	1	CE310100	False	42	False	0	0
0110103A	C	1	VL710105LP	False	40	False	0	0
0110104A	C	1	212011160	True	51	False	0	0
0110105A	A	1	8P-600	False	805	False	0	0
0110106B	A	1	23095-001	False	30	False	0	0
0110106C	A	1	40-2111	False	805	False	0	0
0110106D	A	1	8AT-03087-002	False	805	False	0	0
0110106A	C	1	482263-001	False	51	False	0	0
0110107A	B	1	6501151	False	19	False	0	0

Sec_Part_Number	Receipt_Date	Exp_Date	Qty_on_Hand	Allocated_Qty	Expected_Qty	Seq_#
	03/04/2011	01/01/2001	9	0	0	295

5. Return to Query Mode

Return to Query Mode using the Options menu.
See figure 5.

Figure 5.