

09-113 Deleting a part from a dedicated location

Section: Supervisor and Operator Guide

Topic: Deleting a part from a dedicated location

Procedure Number: 09-113

Summary

This guide will provide you with step-by-step instructions on deleting a part from a dedicated location. This work instruction is used to clear a location so it may be used for random parts.

Procedure

There are three steps to Deleting a part from a dedicated location:

1. Access Location Browse from the Utilities Menu
2. Enter Modify Mode
3. Set Dedicated Flag

1. Access Location Browse from the Utilities Menu

1. Click **Locations**,
2. Click **Location Browse**,
See figure 1.

Figure 1.

Location	CSize	Prof	Part Number	Dedctd	Max_Cell_Qty	Status	TempFlg	Sort Path
011010AAA	1	1		False	0	False		0
011010AAA			1651	False	0			
011010AAA	1	1	13063	False	0	False		0
011010AAA	1	1	30631	True	500			
011010AAA	1	1	30631	False	500			
011010ABB	1	1	30630	False	500			
011010AAA	1	1	31547	True	500			
011010BBB	1	1	36433	False	500			
011010AAA	1	1	36438	False	500			
011010BBB	1	1	23626	False	500			
011010CCC	1	1	876295	False	500			

Sec_Part_Number	Receipt_Date	Exp_Date	Qty_on_Hand	Allocated_Qty	Expected_Qty	Seq.#
	06/20/2003	01/07/1901	1	1	0	3

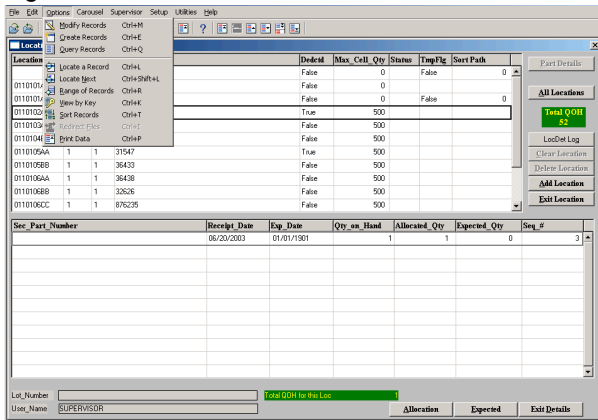
Log Number: Total 500 for this Loc. Allocation Expected Exit Details

User Name: SUPERVISOR

2. Enter Modify Mode

1. Locate and click on the desired location to select it.
2. Enter **Modify Mode**:
 - a. Press Ctrl+M or navigate to the Options menu and select **Modify Records**
See figure 2.

Figure 2.



3. Set Dedicated Flag

1. Click in the **Dedctd** field, type the word **False** in place of the word **True**
See figure 3.
2. Press **esc** on the keyboard to save and exit.

Figure 3.

