

Graphical Navigation - HTML Style

Graphical Navigation - HTML Style

The following are example screen shots of the graphical navigation provided by DoveTrack WCS Dashboard.

In this version screens are actually web pages. This allows us to highly customize these navigation screens. They may be customized with icons provided by the end user as well as wording may be changed to suite the user's business terminology.

Figure	Purpose
Figure 1-Dashboard Splash Screen.	This is an example of the main splash screen. Clicking on an icon takes user to another splash screen with more options. This may be customized.
Figure 2-In and Out of WMS Splash Screen.	Dove Track In and Out programs are found on this splash screen.
Figure 3-Receiving Splash Screen.	This is an example of a splash screen used to navigate custom programs provided to the end customer.
Figure 4-Supervisor Splash Screen 1.	This is an example of a splash screen used to navigate standard and custom programs provided to the end customer. The purpose is to make access to most used programs from a single screen.
Figure 5-Utilities Splash Screen.	Dove Track standard utility programs are found on this splash screen.
Figure 6-Nonstock Splash Screen.	This is an example of a splash screen used to navigate custom programs provided to the end customer.

Figure 1-Dashboard Splash Screen.

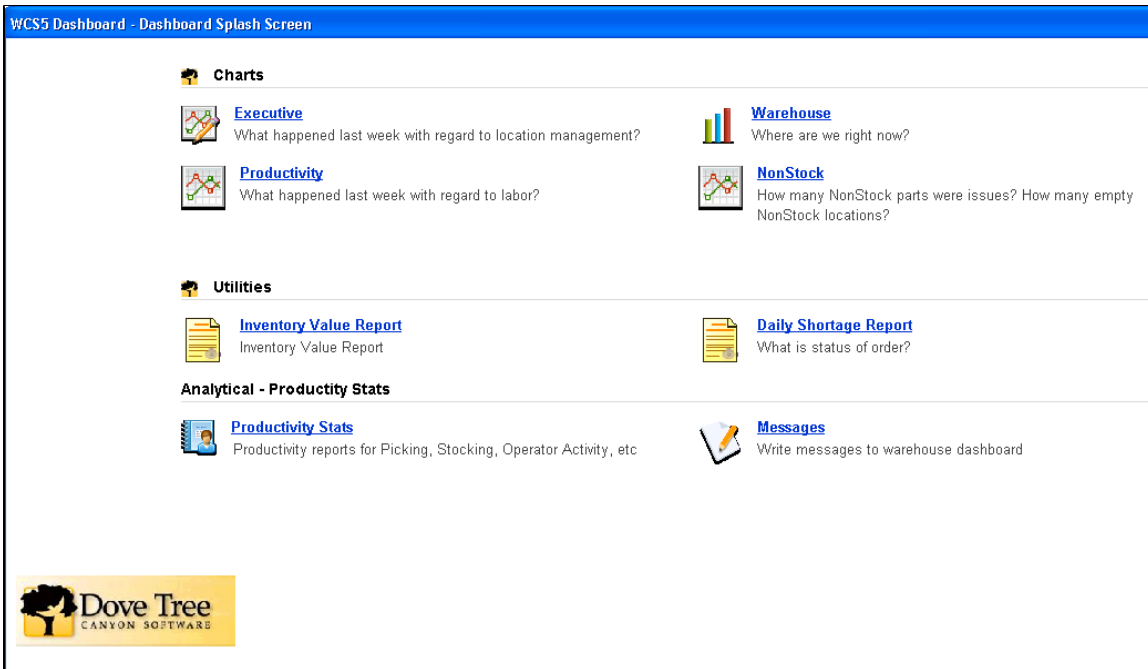


Figure 2-In and Out of WMS Splash Screen.

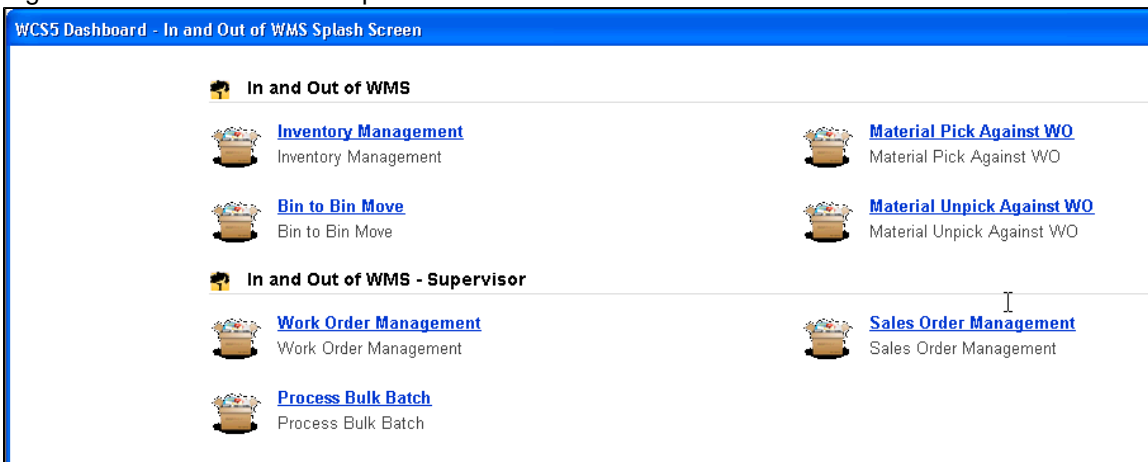


Figure 3-Receiving Splash Screen.

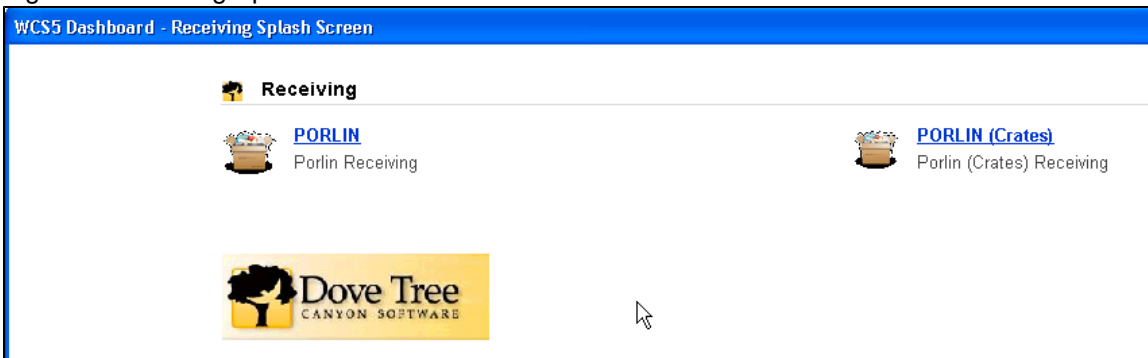


Figure 4-Supervisor Splash Screen 1.

 **Supervisor**

 [PKit Management](#)

 [Export Stockroom Activity](#)

 [Non-JDE Adjustment into WMS](#)

 [Uncompleted XPI Transactions](#)

 [Browse WMS0 exclusion list](#)

 [Family Style Crate Management](#)

 [Parts not STOR01/WMS](#)

 [Location Move](#)

 **Supervisor - Dock To Stock**

 [Browse - R Locations](#)

 **Supervisor - Label Re-Printing**

 [Reprint Transfer Labels](#)

 [Print Labels and Issue Parts](#)

 [Reprint Orange Labels](#)

 [print dock to stock traveler](#)

 [print Crated Parts List](#)

 **Supervisor - RF Style Processes**

 [Confirm Pick RF Style](#)

 [Confirm Putaway RF Style](#)

 **Supervisor - ABC Cycle Counts**

 [Create Cycle Counts](#)

 [Review Cycle Counts](#)

 [Recount Parts](#)

 [Current Cycle Counts](#)

Figure 5-Utilities Splash Screen.

WCS5 Dashboard - Utilities Splash Screen

Utilities - Orders

 [Order Viewer](#)
What is status of order?


 [Orders w/ Zones](#)


 [Part Number](#)
Walk Off Report

 [On Hold](#)
What Orders are on Hold?

 [Picks By Zone](#)
What zones have remaining picks?

 [Purge Completed Orders](#)

 [Status](#)
What is status of order?

 [Short Pick](#)
What orders have shorts?

 [Order by Part Number](#)

 [Today's Activity Report](#)


Utilities - Locations

 [Location Viewer](#)
What is movement history for a location?

 [Location History](#)
What is movement history for a location?

 [Location Contents](#)
What is in a location?

 [Empty Locations Unassigned](#)

 [Location Mismatch](#)
What locations have parts where cell size and pref code does not match part master?

 [Location Sort Path and Level](#)

 [Empty Location](#)
What locations are empty by cell size?

 [Empty Locations Report](#)
Walk Off Report

 [Empty Locations = QOH = 0](#)

 [Print Shelf Labels](#)

Figure 6-Nonstock Splash Screen.

WCS5 Dashboard - NonStock Splash Screen

NonStock

 [Non-Stock Part Management](#)
Non-Stock Part Management

 [PORLIN \(Nonstock\)](#)
PORLIN (Nonstock)

 [Replenish Cribs](#)
PORLIN (Nonstock)

NonStock - Reports

 [Non-Stock Issue Report](#)
Non-Stock Issue Report

 [Location Contents report](#)
Location Contents report

 [Inventory Value Report](#)
Inventory Value Report

NonStock - Browsers

 [Browse - Part Master](#)
Browse - Part Master

 [Browse - Nonstock Departments](#)
Browse - Nonstock Departments

 [Browse - Nonstock Requestors](#)
Browse - Nonstock Departments

 [Browse - Imported Parts](#)
Browse - Imported Parts

 [Browse - Imported Location](#)
Browse - Imported Location